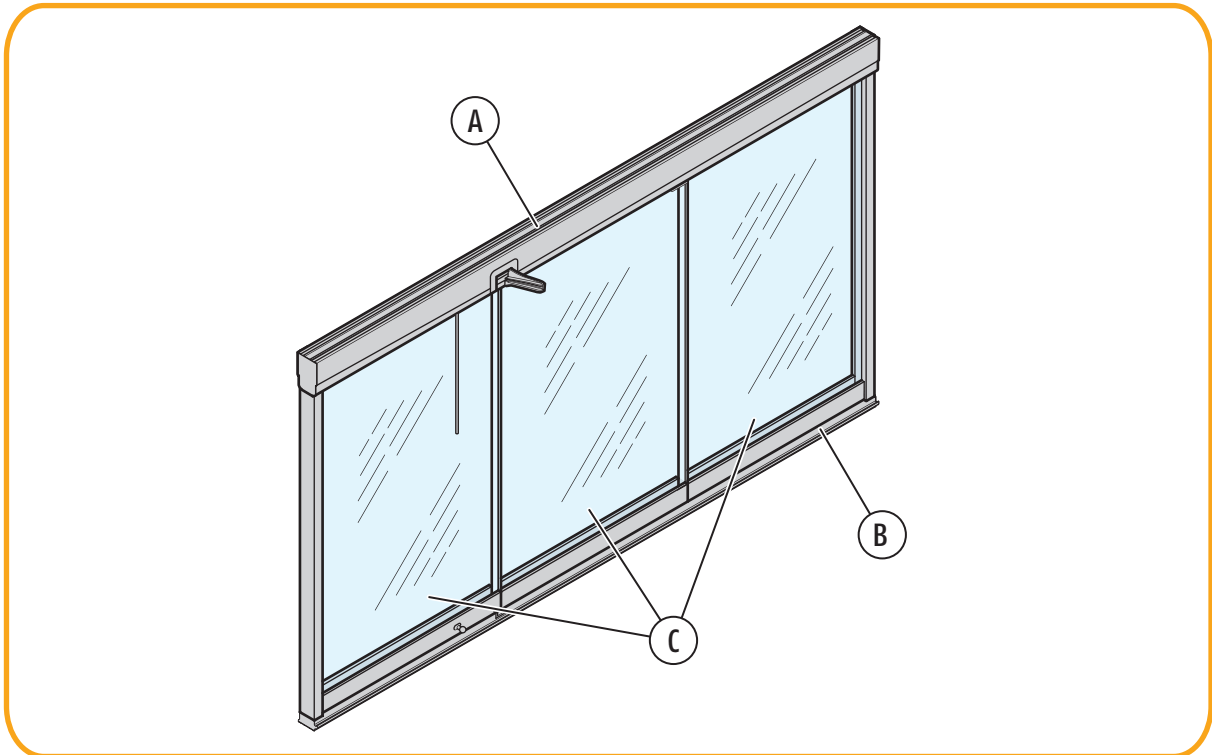


Assembly instructions

SF 25/30/35



Scope of delivery:

- A. Upper rail, height compensation profile
(coupled, do not separate)
- B. Floor rail
- C. Sliding panel
- Accessories pack

Safety instructions:

These assembly instructions are specifically designed for the use of authorised specialists. Observation and implementation of the relevant safety regulations are a prerequisite

Symbols used:

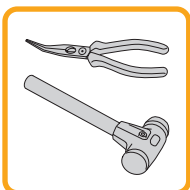
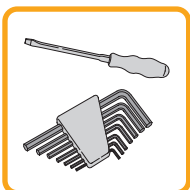
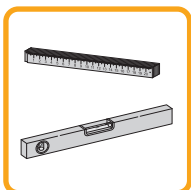
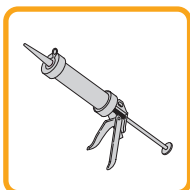
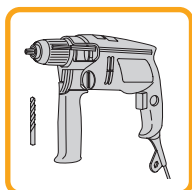


Caution



Note

Tools required:



Content



Description	Page
1. Assembly of upper rail	3
2. Arrangement of lower rail	4, 5
3. Fitting of panel	5
4. Assembly of guide elements	6
5. Adjustment	6, 7
6. Fitting of accessories	7
Assembly of frame (SF 30, SF 35, optional SF 25)	8
Inset floor rail (optional)	9, 10, 11



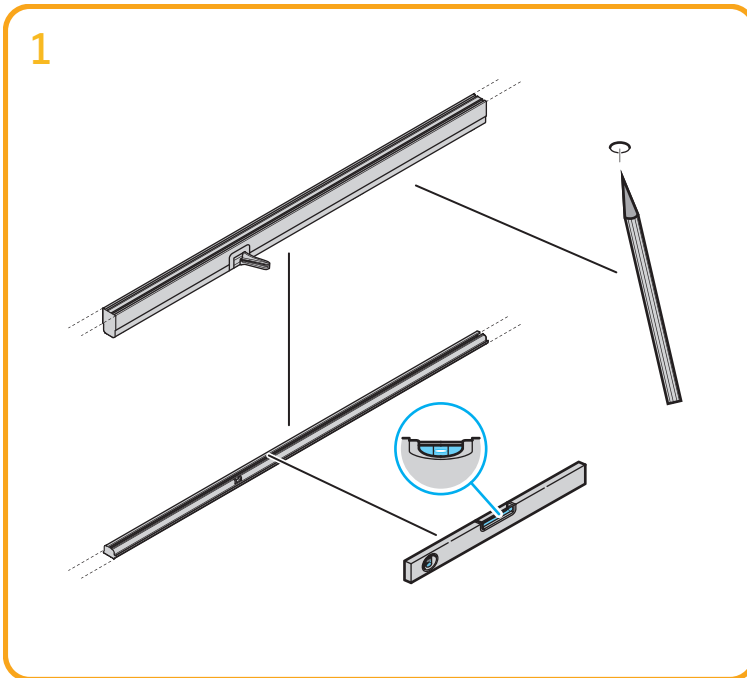
Important:

After successful assembly the fitter must give instructions to the customer in order to avoid incorrect operation.

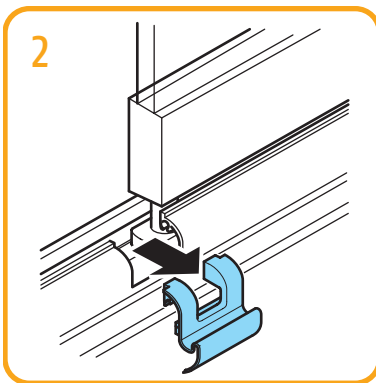
1. Assembly of upper rail



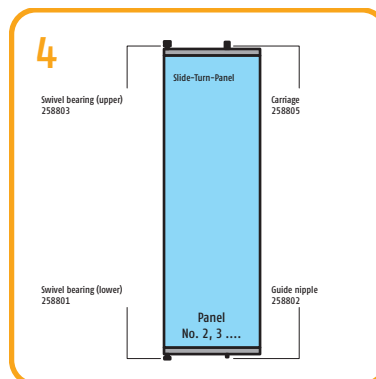
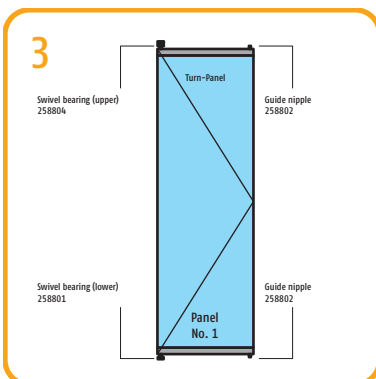
The rail and height compensation profiles are pre-mounted with intermediate setting dimensions and must NOT be separated from each other!



- Place the top rail (including HAP) on the unit and mark out the drill holes.
- Place ceiling rail to one side.
- Pre-drill holes for anchor and insert anchor (we recommend heavy load anchors with good shear and tensile strength qualities, screw head max. diameter 14 mm).
- Now fit ceiling rail horizontally with respect to the ceiling clearance (approx 5 mm).
- Lay the floor rail in the structural opening.
- Determine the position of the rail and arrange it horizontally at an appropriate distance to the ceiling rail (panel height + 8 mm).

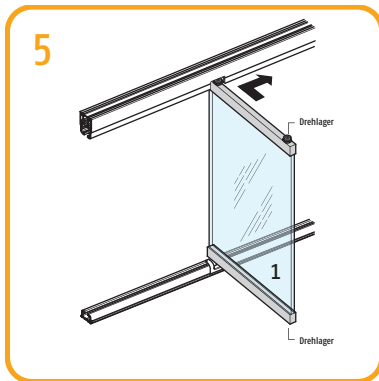


- The lower recess cover (259957) must be removed.



Illustrations show panel types.

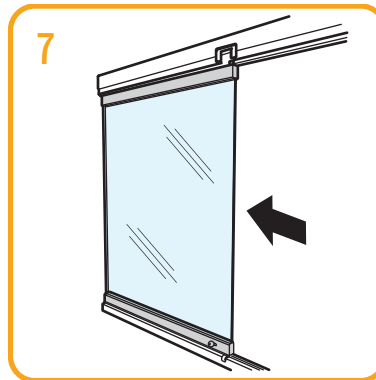
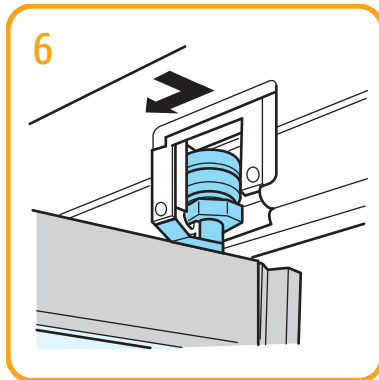
2. Alignment of lower rail



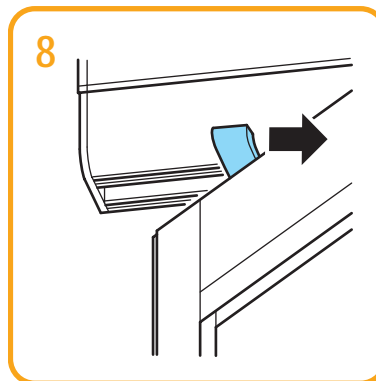
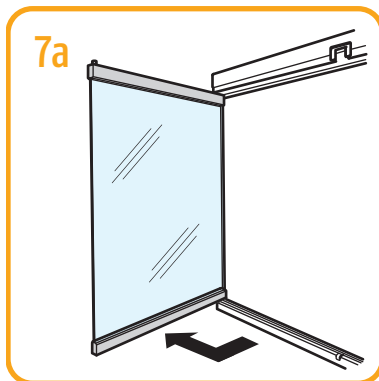
- Insert panel 1 (swivel panel) into the rails through the inspection openings with the stop stud leading as shown in the diagram. Locate clear of the swivel point, insert the ball bearing and the swivel bearing into the rails and then push the complete panel towards the swivel point.



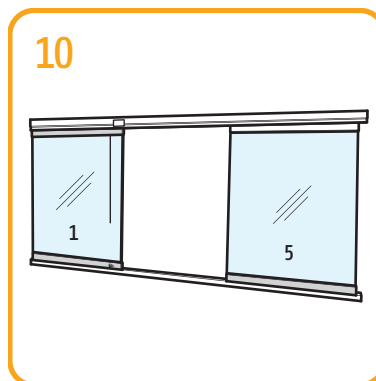
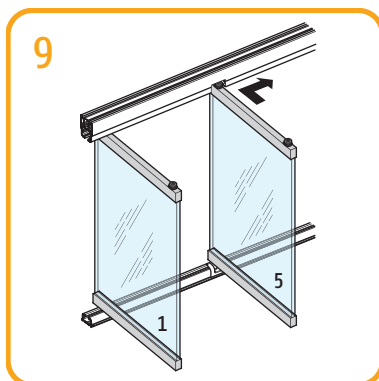
Please note particular attention to the follow points in order to avoid incorrect installation!



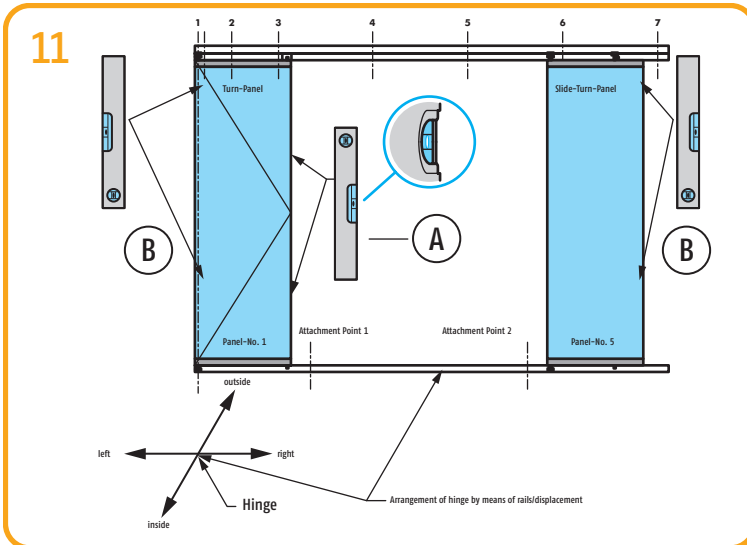
- Insert swivel bearing (258804) through the recess in the top rail towards the hinge.
- Bar is positioned 90° to rail.
- Slide panel towards the hinge whilst turning.



- Slide to stop and secure by turning the bar, see illustration (8).
- Turn bar by 90° inwards (towards recess) until it is positioned lengthways in the rail.



- Fit panel No 5 (with the carriage leading) and slide towards the rail end.
- By sliding the floor rail right or left the panel can now be set exactly vertical.

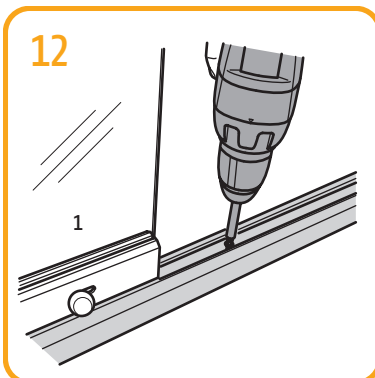


A = Movement right/left by means of spirit level on glass edge and by laying the floor rail on the wall side.

B = Movement inside/outside by means of spirit level on glass edge right and left.

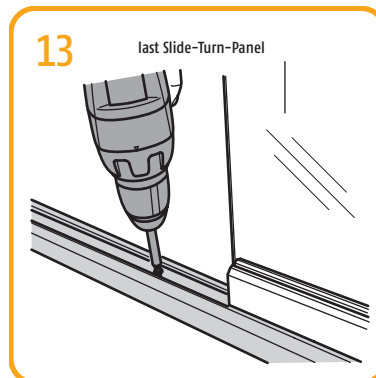


For the follow steps the swivel panel must be supported when open!

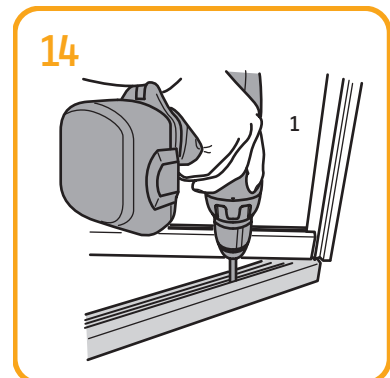


- Attachment of floor rail next to closed panel 1.

- Now you can attach the floor rail by additional drill holes at intervals of approx. 400–500 mm to the structure.

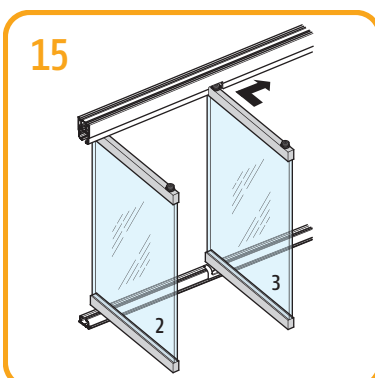


- Attachment of floor rail next to closed panel 2.



- Open swivel panel slightly and place attachment in front of the end positioning stud.
- Next fixing between 2.+ 3. positioning stud.

3. Fitting the panel

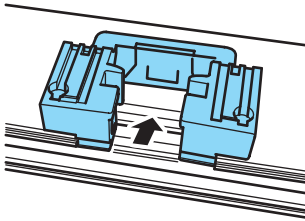


Ensure point 5 is implemented before carrying out test!

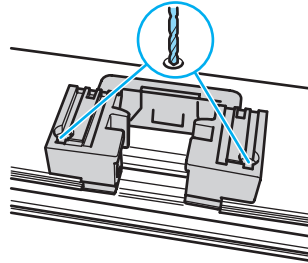
- Now insert the panels as shown in the diagram in the rail in the prescribed order (e.g. for a three panel installation first 3 and then 2) .

4. Assembly of the guide elements

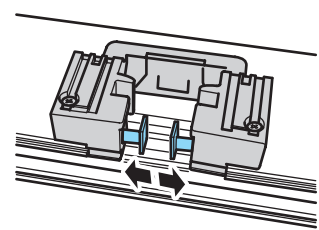
16



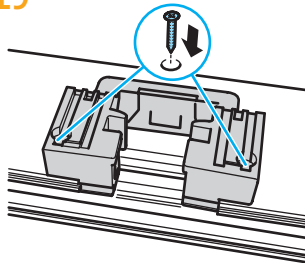
17



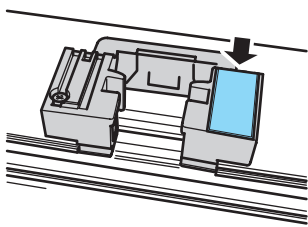
18



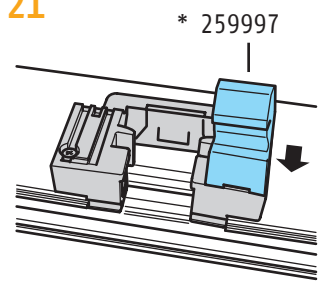
19



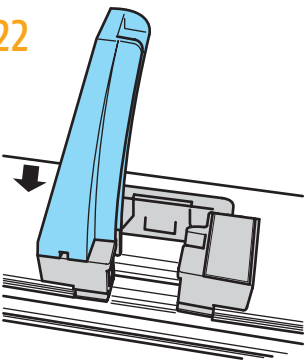
20



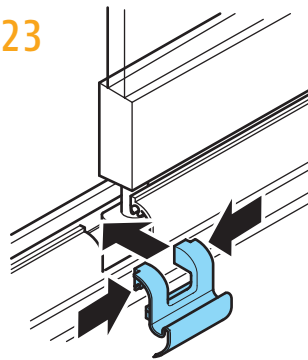
21



22



23



- Assemble as shown in the illustration.
- Pic. 21 shows part (259997) optional available.

5. Adjustment

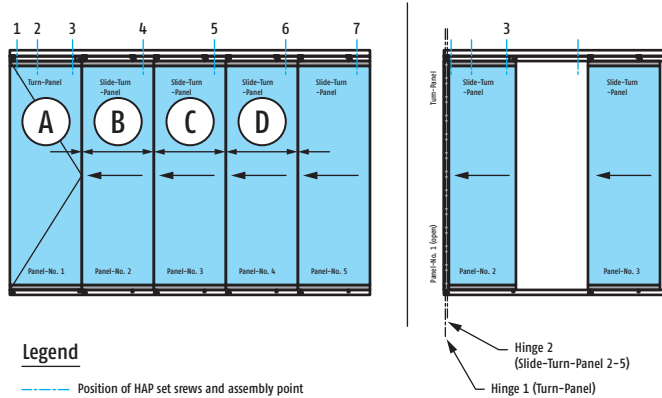
Without height adjustment profile:

- If the upper and lower glass retaining profiles are not exactly matched to each other this can be compensated for by fitting spacers under the upper rail (similar to adjustment with the height compensation profile).

With height adjustment profile:

- Set the swivel panel to a height that allows a 5 mm gap to appear between the panel and the guide rail. To do this use the furthestmost adjusting screw above the swivel point of the swivel panel. Now slide the second panel towards the opened swivel panel. Check that panel 2 butts up against panel 1 both above and below (swivel bearing against swivel bearing). This can be adjusted via adjusting screw 3 adjacent to the recess between panels 1 and 2.

24



When adjusting the rail always re-adjust the additional support screw (screw 2) in the centre of the first panel.

Explanation of adjusting screw use:

Adjusting screw 1: This adjusting screw determines the clearance to the floor rail.

Adjusting screw 2: Auxiliary screw for load bearing. Not an adjusting screw!!! It must only be slightly tightened in order to retain load-bearing capability.

Adjusting screw 3: This screw is used to set the parallelism of hinge 1 and hinge 2.

Caution: If this setting is incorrect the mechanism may be damaged!

Adjusting screw 4: This adjusting screw sets the parallelism of gap A

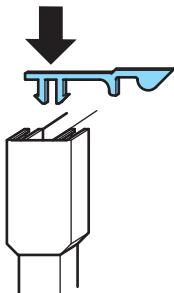
Adjusting screw 5: This adjusting screw sets the parallelism of gap B

Adjusting screw 6: This adjusting screw sets the parallelism of gap C

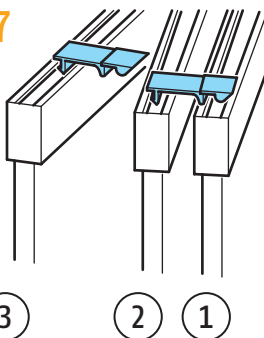
Adjusting screw 7: This adjusting screw sets the parallelism of gap D

6. Accessory assembly

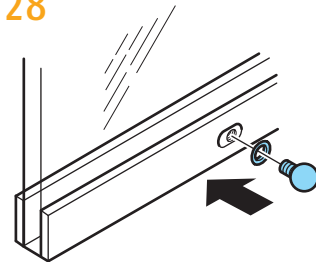
26



27

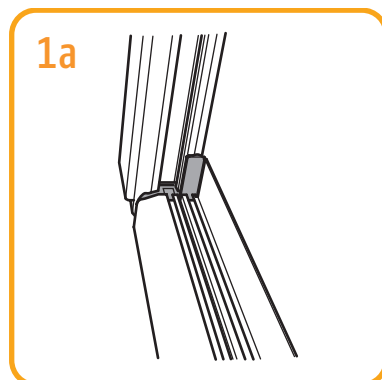
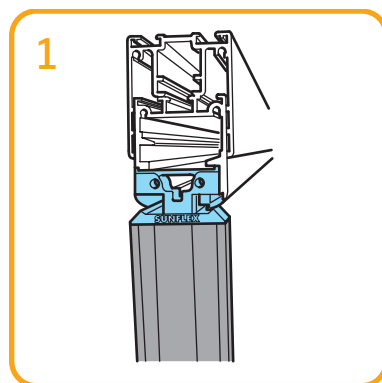
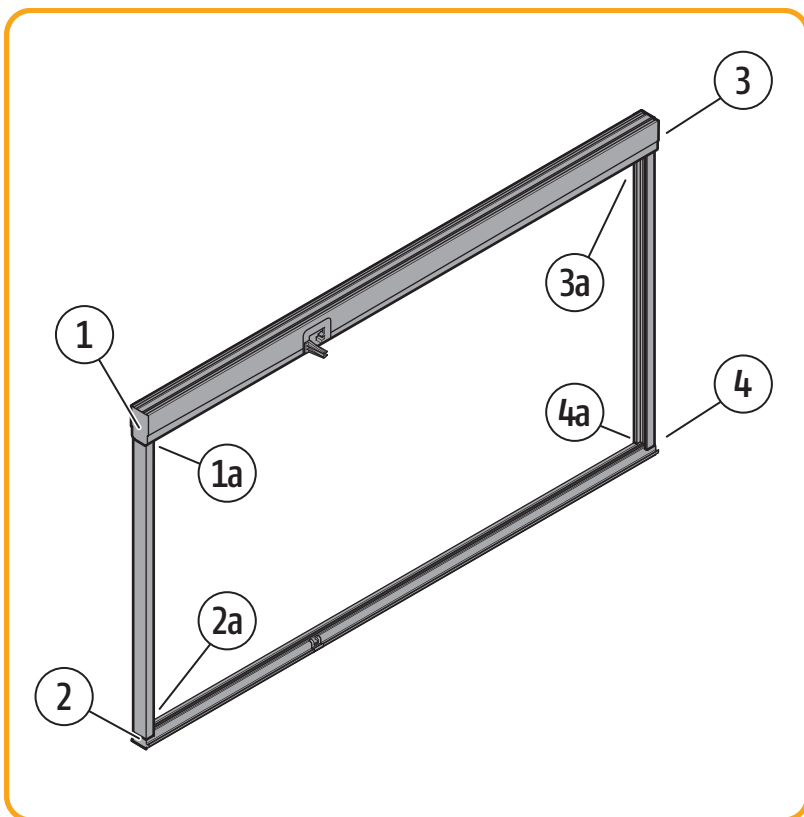


28

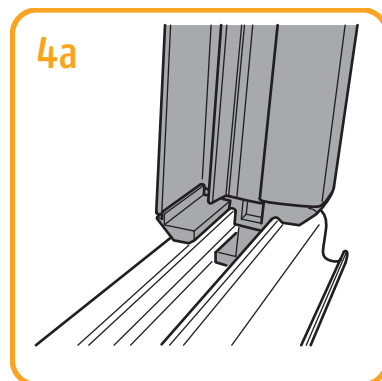
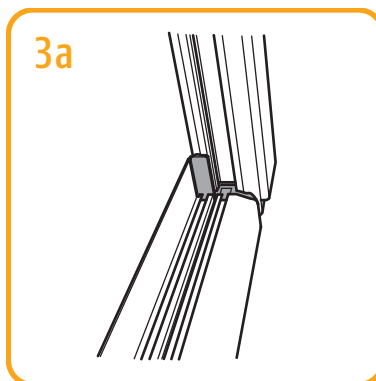
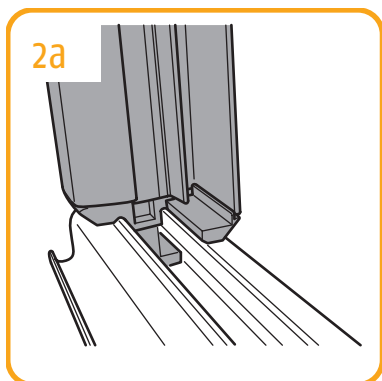
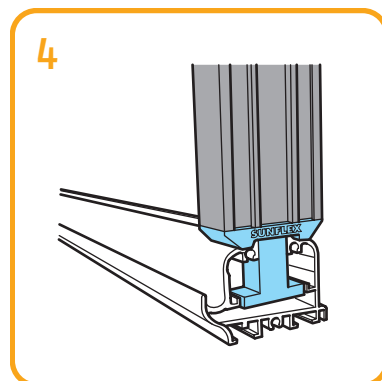
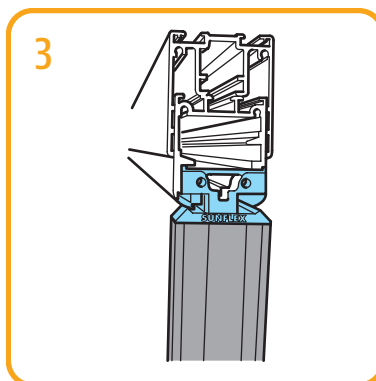
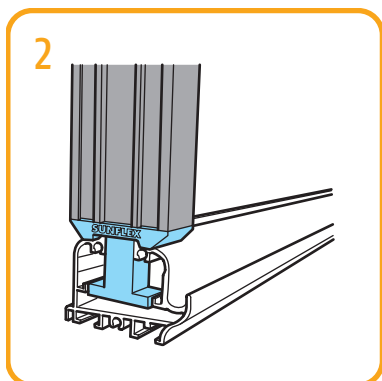


- The supplied panel rails (259954) are fitted to the upper section of the panel as shown in Fig. 26.
- These panel clips ensure that the panels are secured to each other when open as shown in Fig. 27.
- Arrange panel clips in offset positions.
- Push the insulation bush over the grub screw. Now screw the complete unit into the lower locking slide. Screw into the slide bar ensuring that the slide remains free to move.
- As shown in Fig. 28 the slide is secured by screw tight.

Assembly of frame

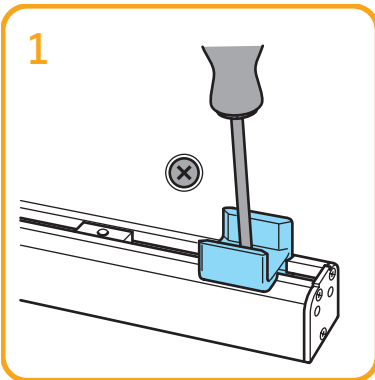


Note lower/upper mounting shoe!

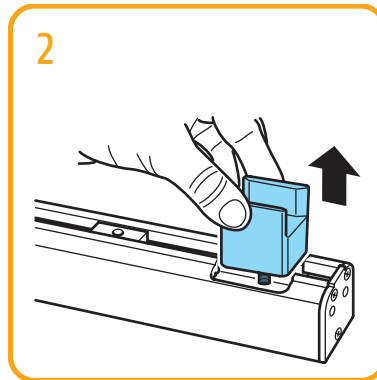


Inset floor rail

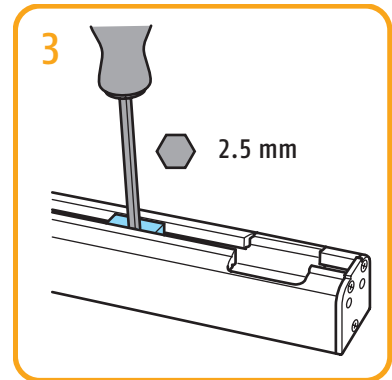
SUNFLEX



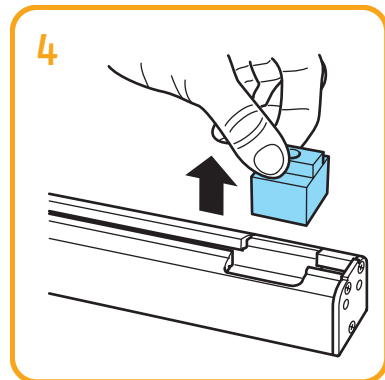
- Unscrew guide block (259924).



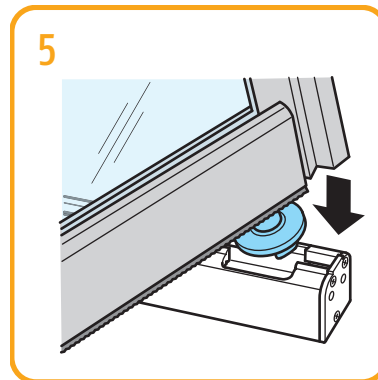
- Remove guide block (259924).



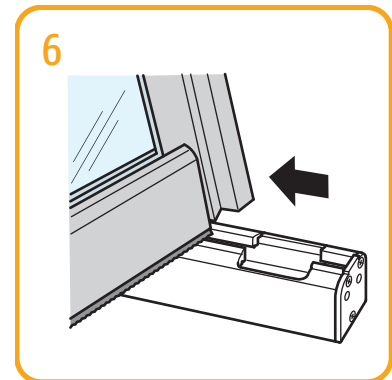
- Unscrew delimiter (259965) with 2.5 mm Allen key.



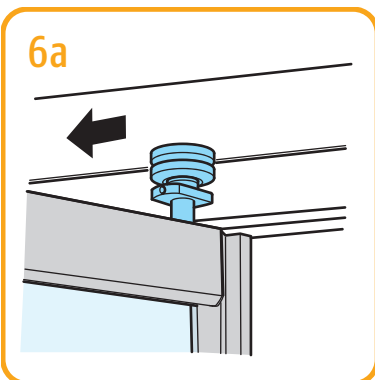
- Remove delimiter (259965).



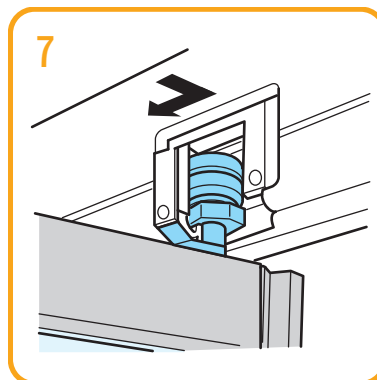
- Insert swivel bearing (258801) of the swivel panel through the opening in the floor rail.



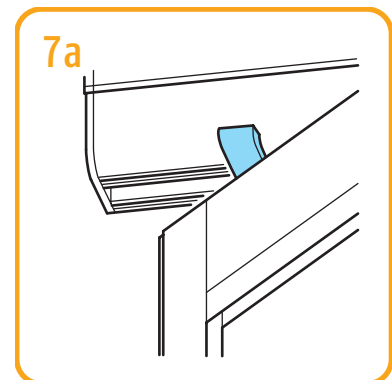
- Guide swivel panel towards the upper recess.



- Slide upper swivel bearing (258804) towards upper recess next to the ceiling rail.



- Guide swivel bearing (258804) through the recess above in the ceiling rail (observe position of bar, see Fig. 7a)

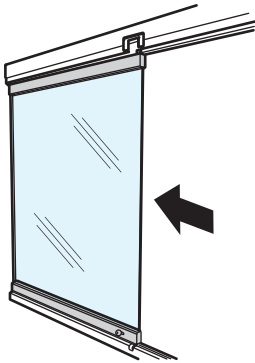


- Bar is positioned 90° to rail.

Inset floor rail

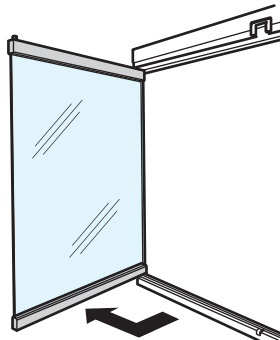
SUNFLEX

8



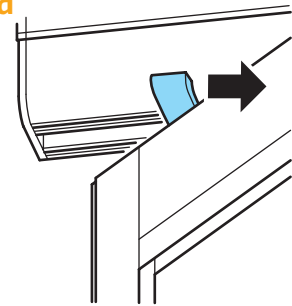
- Slide swivel panel lengthways up to last hinge.

9



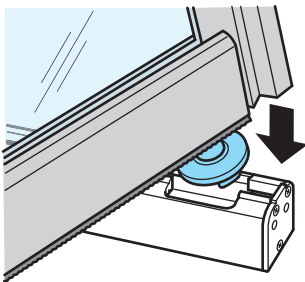
- Slide panel towards hinge whilst turning.

9a



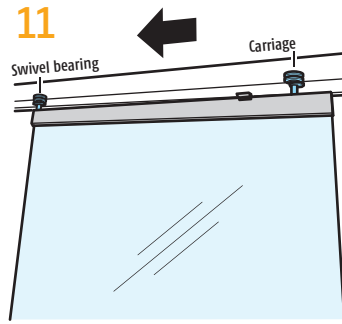
- Turn bar 90° inwards (towards recess) until it is positioned lengthwise in the rail.

10



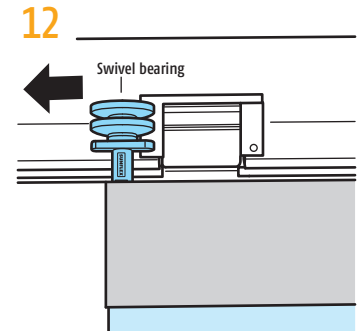
- Insert swivel bearing of panel 2 through the opening in floor rail and slide towards hinge.

11



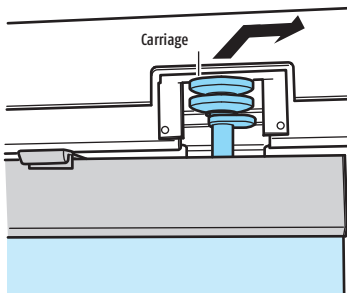
- Guide swivel bearing and carriage parallel to the top rail towards the hinge.

12



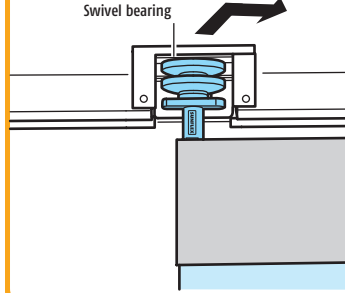
- Guide swivel bearing (258803) past the recess towards hinge.

13



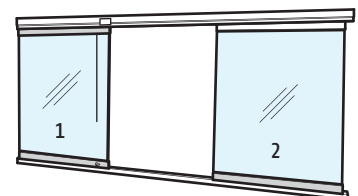
- Insert carriage into recess and then move panel 2 away from hinge.

14



- Insert swivel bearing into recess and slide panel 2 to the end of the rail.

15

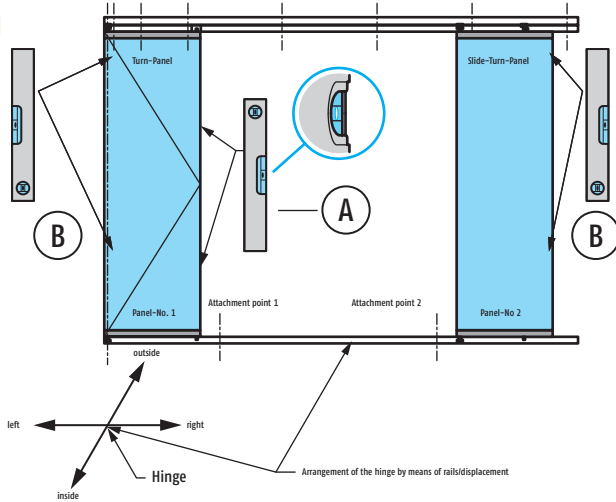


- Installation is positioned as shown and is aligned according to instructions (Fig 15a).

Inset floor rail

SUNFLEX

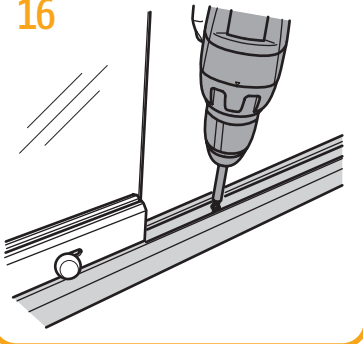
15a



A = Movement right/left by means of spirit level on glass edge and by laying the floor rail on the wall side.

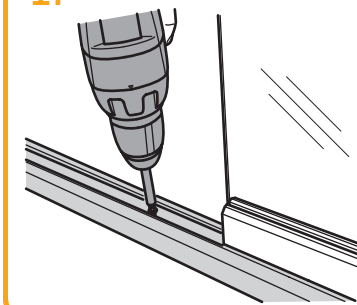
B = Movement inside/outside by means of spirit level on glass edge right and left.

16



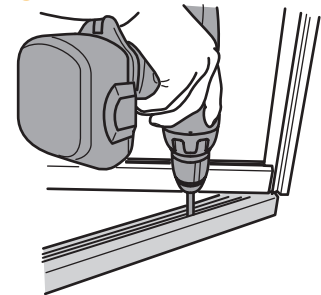
- Attachment of floor rail next to closed panel 1.

17



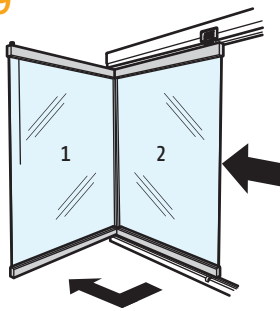
- Attachment of floor rail next to closed panel 2.

18



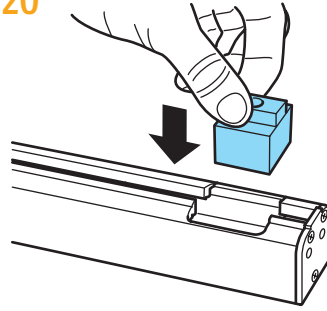
- Open swivel panel slightly and place attachment in front of the end positioning stud.
- Next fixing between 2.+ 3. positioning stud.

19



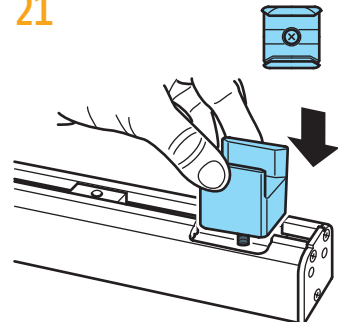
- Open panel 2, press towards hinge whilst twisting open.
- Fit panels 3,4,5 and proceed as for panel 2.

20



- Fit recess components above (see Page 6).
- Fit delimiter, slide against swivel bearing of last panel.

21



- Insert guide block and screw tight.
- Wide face outside, narrow face inside.

SUNFLEX 